

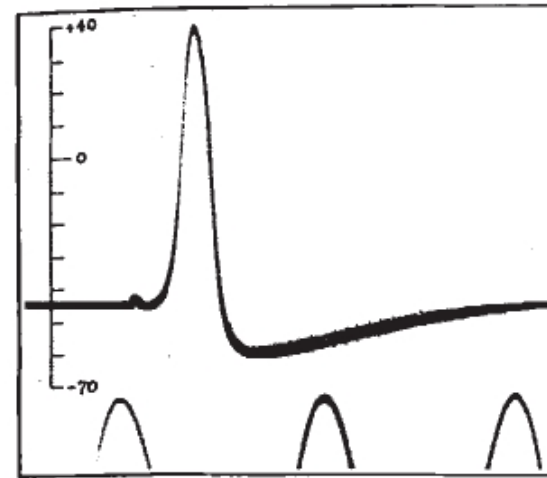
# Is the lecture theatre dead?

**Andrew JT George**

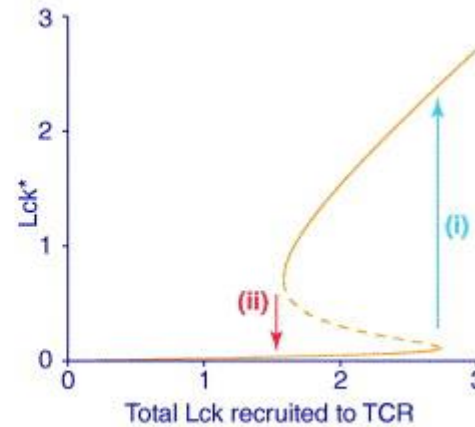
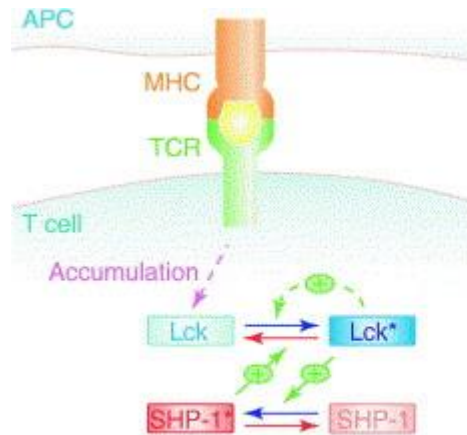
**HEDQF debate: 31 October 2017**



# I hope not!



....and don't forget the lecturer!



*TRENDS in Immunology*

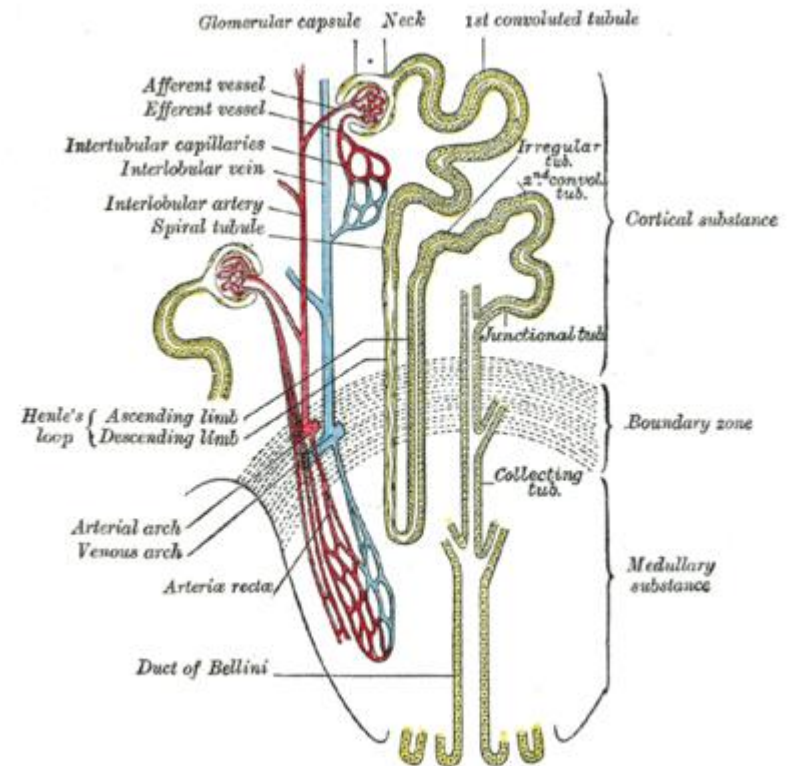
# But...

The lecture theatre may be different from my youth

The lecture theatre is overused for the wrong things

It does not always work (counter current exchange)

Why should our students come to a physical university?



# Brunel: new learning and teaching centre

Date - go to  
view,slide  
master,insert, header

Encourage use of small group teaching

Encourage team based learning

Encourage informal learning in groups and individually

Give students another learning home in campus

Encourage collaborative learning (including at a distance)

Change the way in which we teach (and students learn)

Raise aspiration of students and university

Form a new heart of the campus

The building cannot do all this on its own!





# Considerations

Flexibility and adaptable  
(kinetic important)

Technology

Heterogeneity of space  
(formal and informal)

No lecture theatres

Working with the design  
team (Penoyre & Prasad)  
to engage with students  
and staff

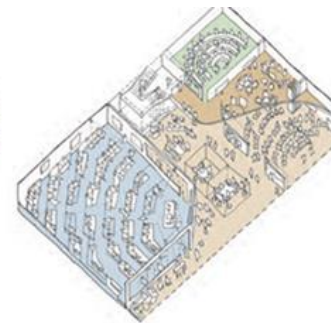


Approaching the Quad from the main eastern campus, entrance along the major east-west pedestrian route, the new 'D' building acts as a gateway to the Quad. The lower two floors are highly glazed along the southern and western edges allowing view-through to the Quad. Major entrances in the south east corner and onto the Quad on the west side allow for movement through the building. The double height glazed 'D' corner at east back under the cantilevered upper floors to open up the Quad at this corner and allow free student flow into and out.

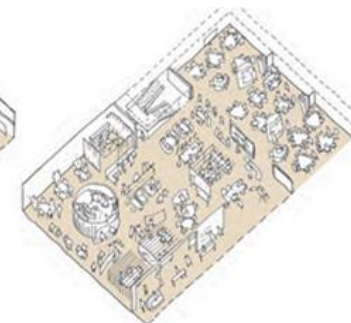
The proposed landscape design unifies the Quad, removing the myriad of complicated and unpleasant level changes. The central stepped pit is infilled and the surface slope gentler from east to west and then to the north to provide level access between the Quad and the 'D' and Mansueth Buildings. Soft landscaping is moved away from the heavily shaded southern edge of the Quad to more continuous sun-filled areas predominantly to the north of the Quad.



Technology Enabled Active Learning (TEAL) format



Alternative layout showing group and seminar style lecture formats and 'D' rooms in presentation format



Potential future scenarios: big space in 'project mode' & smaller spaces joined together to create large active learning spaces